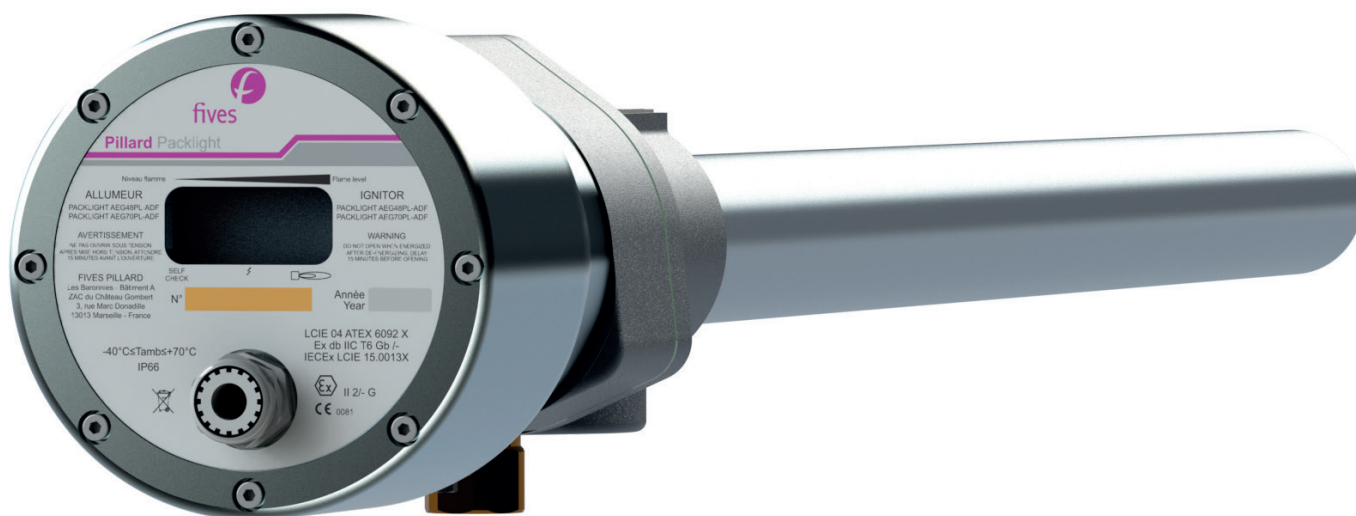


Pillard Packlight™

Gas ignitor for industrial burners



Flexible, quick and highly reliable
technology

- A maximum efficiency device
- Adaptable to a wide range of equipment
- Maintenance-free

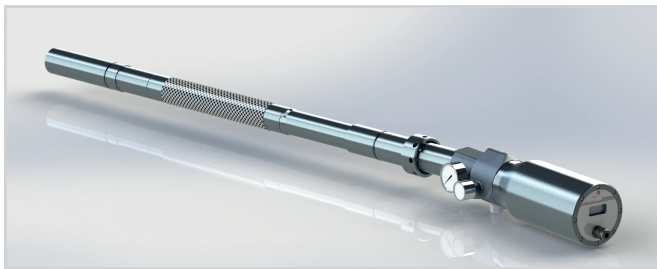
Pillard Packlight™ is a reliable ignitor, suitable for all types of industrial burners

IGNITION PRINCIPLE

Pillard Packlight™ is a gas ignitor suitable for all types of industrial burners firing on natural gas or propane. It is compatible with induced, blown or compressed air. Ignition is carried out by a high voltage transformer which generates the necessary ignition spark.

ULTIMATE RELIABILITY

Pillard Packlight™ ensures high ignition reliability thanks to Fives' ultimate technology: self-checking by detecting the presence of ionization. In the case of a flame shutdown, a switch is activated within 2 seconds and the flame level displayed on the ignitor. This way, the technology ensures permanent flame detection.



Flexible version

ALL-IN-ONE AND FLEXIBLE EQUIPMENT

Pillard Packlight™'s design includes all functions into one easy-to-use unit. The rod length can be adapted to all types of industrial installations:

- Low flow, for installations requiring a permanent pilot
- High flow, for installations requiring intermittent ignition

CERTIFICATIONS

- IP65, protection rating according to EN60529
- ATEX, Ex II 2G - Ex d IIC T6 Gb

SERVICES

- Junction box (ATEX version available)
- Tailored cable length (standard version only)

OPTIONS

- 3-year warranty
- Maintenance contract
- Commissioning assistance

The information provided on this document is for information purposes only and does not constitute a legal obligation or a warranty, expressed or implied, of any kind.

TECHNICAL FEATURES

Power	20kW to 150kW (up to 4MW upon request)
Outer tube diameter	IP66/IK07
Operating mode	160 x 159 x 91 mm/0.34kg
Air supply	Packing gland M20 for diameter cable from 6 to 12mm
Rod length	115 / 230V AC (+10%, -15%), 10VA
Operating temperature	-40°C to +70°C
Materials	— Sleeve: steel 304L — Electrodes: kanthal — Rear housing: aluminium
Gas flow rate	1 to 15Nm ³ /h according to model type and usage
Gas inlet connector	3/8" NPT
Air flow rate	3 to 50Nm ³ /h according to model type and usage
Air connector	G 1 1/4" (blown air) or 3/8" NPT (compressed air)
Sweeping air connector	3/8" NPT
Warranty	1 year

INCORPORATED IGNITION TRANSFORMER

Ignition voltage	10,000V
Duty cycle	50% / 40s

INCORPORATED FLAME DETECTION BY IONIZATION

Cut-off time	< 2s
Housing display	Ionisation intensity (8 LED), self-checking (1 LED), ignition (1 LED)
Temperature range	-20°C to +105°C

CABLE

Standard length	5m
Outer diameter	12mm
Cross-section	9 x 0,75mm ²
Admissible temperature range	-40°C to +180°C
Maximum allowable length	500m

CONTACT

fpi.services@fivesgroup.com
T +33 (0)4 91 80 90 21

Fives Pillard

Les Baronnie - Bâtiment A - ZAC du Château Gombert
3, rue Marc Donadille - Marseille, 13013 - France
www.fivesgroup.com



fives
Industry can do it