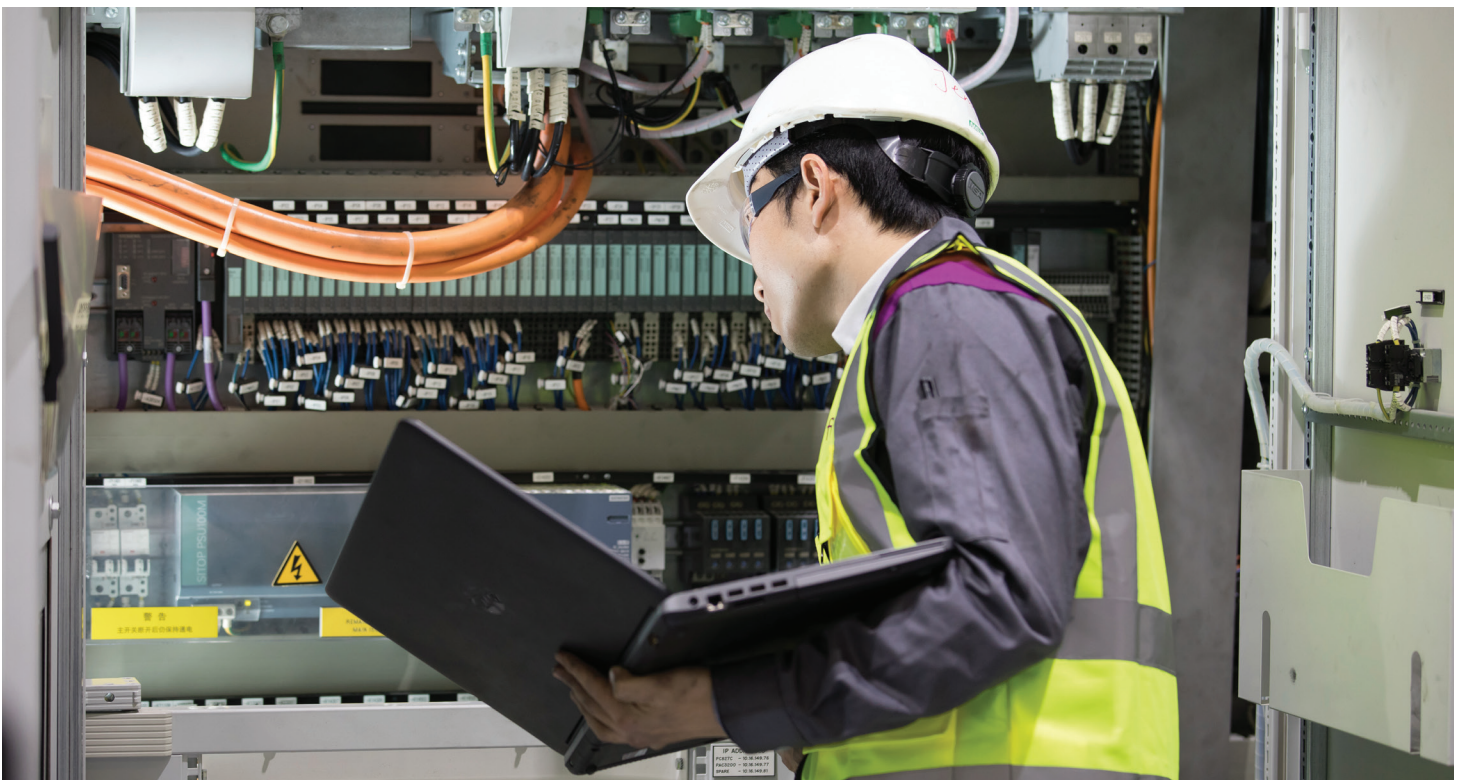


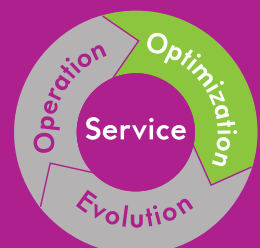
Dongfeng Honda, China

Landis LT1 cycle time optimization



Using proprietary artificial intelligence GrindXelerator™ software along with experienced experts from the UK and China to optimize parameters of two Landis LT1 camshaft grinding machines

- Optimized production volumes and quality
- Productivity gain estimation achieved: 18.6% cycle time saving (26 seconds)
- Responsive service completed within 2 months



Scope of service:

- Study of the machine's operation and the existing process
- Use of GrindXelerator™ software to define and edit new profiles and parameters taking into account the characteristics of the Camshafts, their material, geometric constraints and DHAC specificities
- Installation and optimization of new parameters

CUSTOMER ID

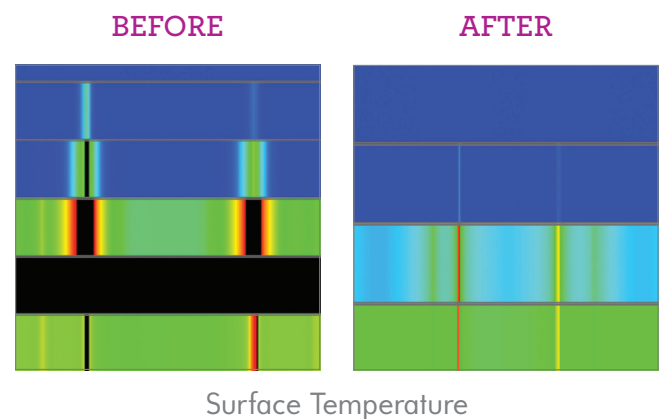
- Dong Feng Honda Auto Components, Huizhou
- 2x Landis LTI Cam Lobe Machines
- 5MS-Exhaust Shaft Type
- 13 Lobes Ground Using a Single Rim Wheel
- 1x Pump Lobe Plunge

18.6 %
cycle time saving

+

heat generation
reduced by
289 °C

	Before GrindXelerator	After GrindXelerator
Shaft Cycle Time	140 seconds	114 seconds / 26 seconds saved
Max Surface Heat Generated (theoretical)	1247°C	958°C
Worst Profile Error (measured)	10.7 microns	10.7 microns



The information provided on this document is for information purposes only and does not constitute a legal obligation or a warranty, express or implied, of any kind.

SHANGHAI FIVES AUTOMATION & PROCESSING EQUIPMENT CO., LTD

fap.fgup@fivesgroup.com
T +86 020 3947 5212

Plant No.12, American Industry Park, No.48, Hongmian Ave.
Huadu District, Guangzhou, China, 510800 - CHINA
www.fivesgroup.com

Bryant | Cincinnati | Cranfield Precision | Daisho | Gardner | Giustina | Landis



fives

Industry can do it